



## **Easy PC User Manual**

**(includes Installation Instructions)**

## Table of Contents

Connecting your Comfy Keyboard on Windows ME/2000/XP/Vista	2
Connecting your Comfy Keyboard on Windows 98 SE	3
How to install Comfy Games on Windows 98SE/ME/2000/XP	5
How to install Comfy Games on Windows Vista	5
Launching the game	8
Game Menu	9

This guide includes instructions on how to connect the Comfy Keyboard and install Comfy games with various operating systems step by step. To get the most out of the Comfy System, read the Parent Guide (provided in the keyboard package) or download it from our "Customer Service" section on our site [www.comfyland.com](http://www.comfyland.com).

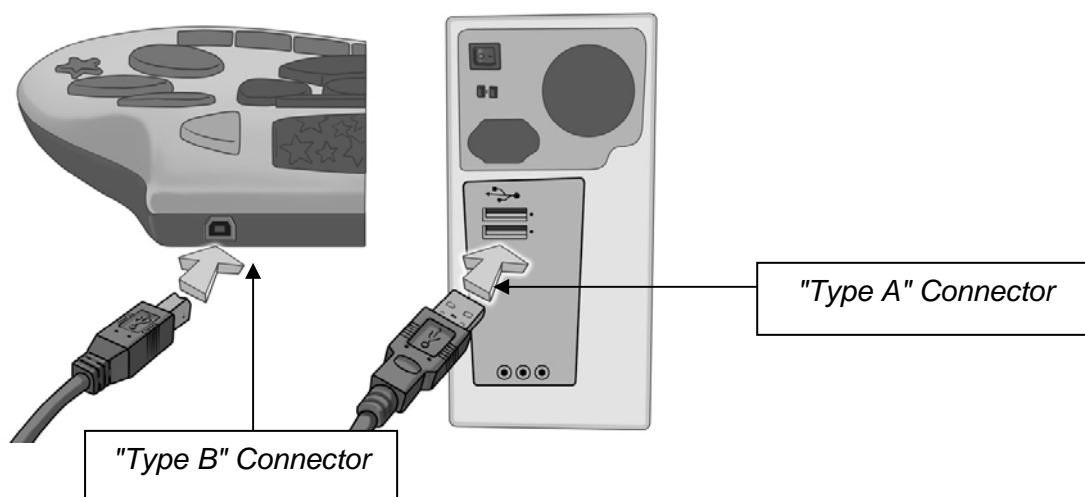
### Minimum System Requirements

- \* Processor: 800 MHz and above
- \* OS: Microsoft Windows 98SE/Me/2000/XP/Vista
- \* Memory: 128 MB RAM available memory
- \* Hard Disk: At least 30 MB free space
- \* CD-Rom Drive: 4X over sampling and above
- \* USB port
- \* Additional requirements: Sound card, color display and speakers

## Connecting the Comfy Keyboard

The USB connection of the Comfy Keyboard enables you to connect the keyboard while the standard keyboard remains connected to your computer. In this way, it is possible to work with both keyboards simultaneously.

- Turn on your computer.
- Locate a free USB port on your computer.
- Connect the USB connector "Type B" to the USB port of the Comfy Keyboard.
- Connect the USB connector "Type A" to the USB port of your PC.
- Installation of the keyboard should be automatic and may take up to one minute. (You may observe the status of the installation by the pop-up messages that appear on the computer screen.)
- Proceed to the "How to Install Comfy Games" section.

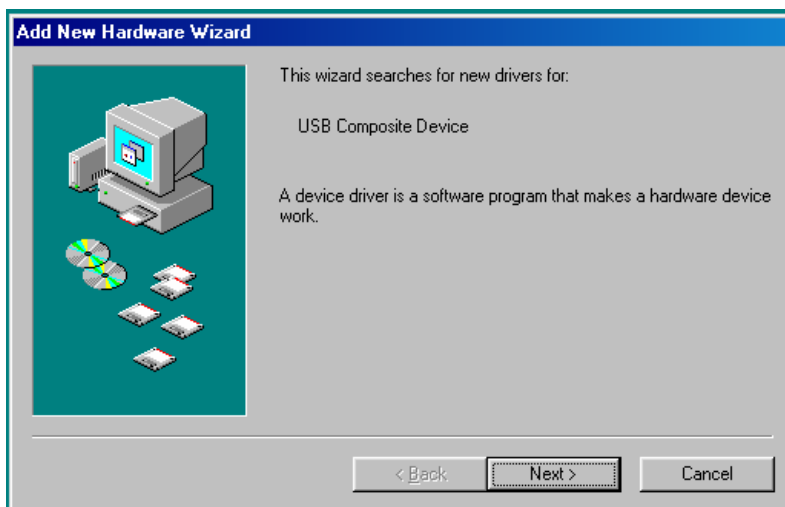


# Connecting the Comfy Keyboard on Windows 98 Second Edition

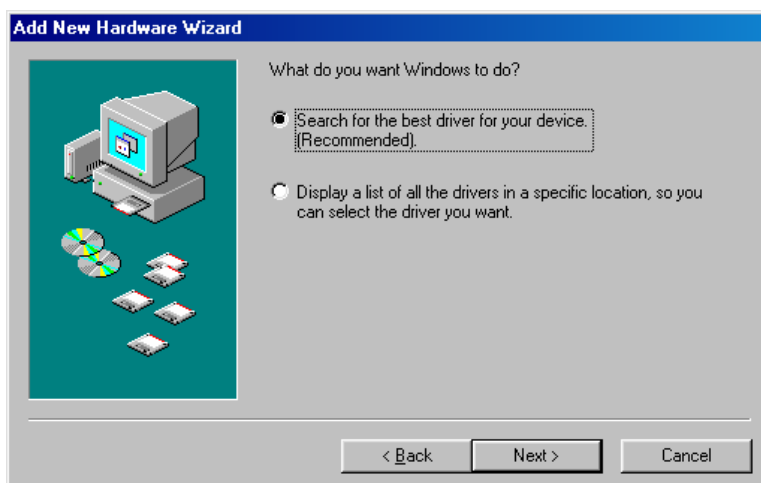
**Note:** You may need your Windows 98SE operating system CD in order to install the needed drivers on your computer.

- Turn on the computer.
- Locate a free USB port on your computer.
- Connect the USB connector "Type B" to the USB port of the Comfy Keyboard.
- Connect the USB connector "Type A" to the USB port of your PC.

The following windows will appear:

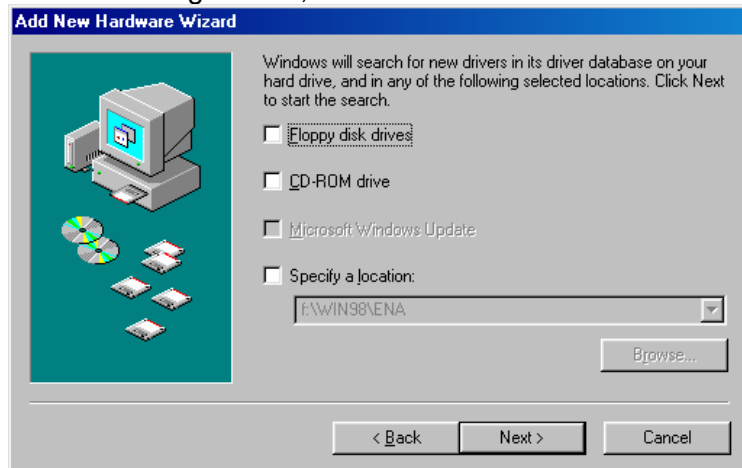


Click **NEXT**.



Choose "Search for the best driver for your device" and click **NEXT**.

In the following screen,



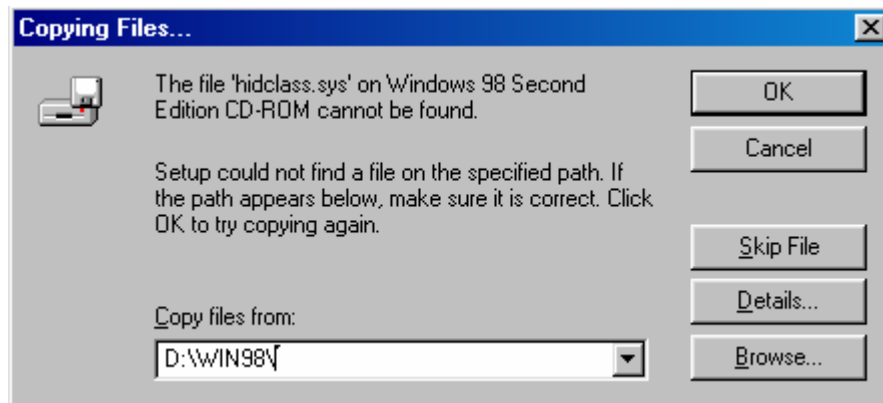
Do not mark any of the options. Click **NEXT**.

***(At this point, you may be prompted to insert the Windows 98SE CD into your CD-ROM drive. Please follow the instructions and click NEXT.)***

If the following screen appears, click **OK**. If it pops up again, make sure that the file path (shown in the bottom of the pop-up window) is targeting your CD-ROM drive and windows installation folder.

If the prompt does not appear, click the browse button to locate the windows installation folder in the CD-ROM drive.

This installation process may appear up to 3 times. Repeat this step again if needed.



- Proceed to the “How to the Install Comfy Games” section.

## How to install Comfy Games (Windows 98SE/ME/2000/XP)

- Insert the game CD into your CD-ROM drive.
- The Installation program should automatically launch. If it does not, click on the "setup.exe" file from your CD-ROM.
- Follow the installation instructions displayed on the screen.
- Press "Finish" to complete installation.  
A Comfy icon will appear on your computer desktop and in the *Start* sub-menus.



Insert original game CD into  
CD-ROM drive

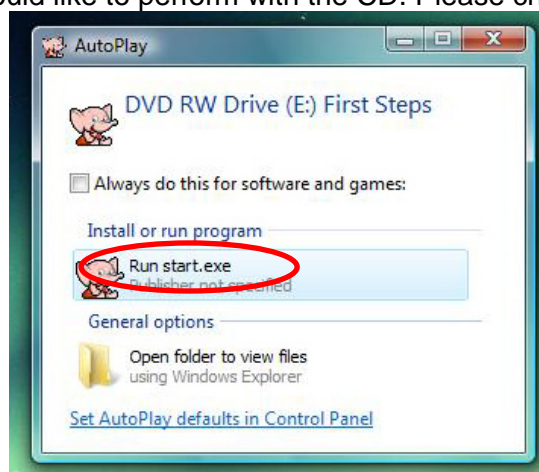
## How to install Comfy Games on Windows Vista

Before starting, please note:

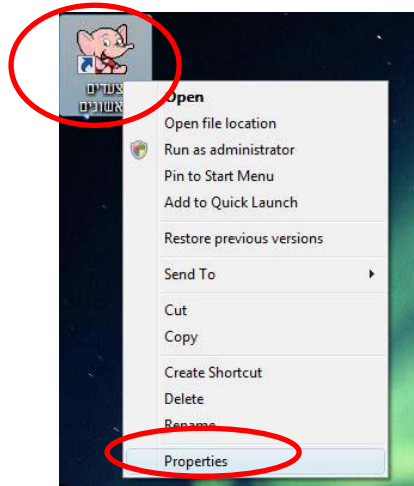
\* You must have Flash plug-in installed on your computer to run Comfy games on Vista OS (If you don't have it, you may download it from [www.adobe.com](http://www.adobe.com)).

\*\*During installation, you will be prompted in several occasions by Vista to allow the process and program to run. Please use the "allow" option, otherwise you will not be able to run the games.

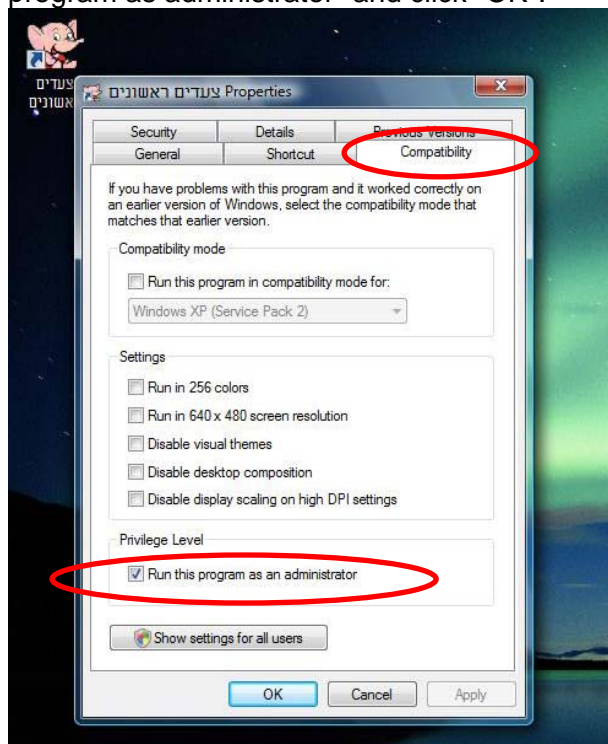
- Insert the game CD into your CD-ROM drive.
- The below message will appear. This message lets you choose what action you would like to perform with the CD. Please choose "Run start.exe"



- The next message that will appear is "A program needs your permission to continue", this program is the setup.exe, please click "continue".
- Follow the installation instructions displayed on the screen.
- Press "Finish" to complete installation.
- A Comfy icon will appear on your computer desktop and in the "Start" sub-menus, right click on the Comfy icon and choose "properties".



- Under "Compatibility" tab, mark "v" in the check box next to "Run this program as administrator" and click "OK".



- Installation has completed. Double click on the Comfy game icon on your desktop to enter the game.



# Game Menu

After having successfully installed the Comfy Keyboard and the CD game, it's time to play! The first time you install the CD game, you will be automatically prompted to choose the desired language and your child's level. You can change the language or level at any other time from the CD menu that opens up each time you play with the CD game.

You will find the following contents in the "Game Menu" of all our Comfy Games:

- Product Range
- Parent Section
- Choose Level (in CDs that contain inner sub-levels)
- Change Language
- Activity Center
- Start Game

## **Product Range**

In each Comfy software you will find a short description of all our product line so you can further choose the next software with more challenging activities for your child.

## **Parent Section**

Our Parent Section contains valuable information for parents. We advise you to enter this section to get more information about the following subjects:

- Educational values
- Parent Guide with specific information about the specific software you purchased
- Frequently asked questions
- Online Warranty Registration
- Performance Settings
- Enter Game

## **Choose Level**

Some of our 1-3 age level software titles contain inner sub-levels. These sub-levels allow you to choose the most appropriate level for your child at each stage.

## **How do I change levels?**

- ✓ Click on the "Change Level" button in the menu.
- ✓ Choose a level by clicking on one of the cubes in the level desired.
- ✓ When you press the red "Enter Game" button, the game will begin in the level you selected.

## **Change Language**

All our software games are multi-lingual. You may change language at anytime and play the game in the language you selected.

## **How do I change a language?**

- ✓ Click on the "Change Language" button in the menu.
- ✓ Use the up and down arrows to view all the languages available. Click on the flag of your preferred language.
- ✓ When you press the red "Enter Game" button, the game will begin in the language you selected.

### **Activity Center**

Our Activity Center enables you to print and color with your child the Comfy characters from each game. All you need to do is enter this section and click on the "Printer" icon displayed on the screen. Encourage your child to color his most favorite Comfy characters.

### **Start Game**

Entering the game is simple. You simply click on the red "Enter Game" button in the CD Menu.

### **How do I exit the game?**

Exiting Comfy games require parental assistance and cannot be accomplished by the child alone. This allows the child to independently play in the Comfy environment without accidentally entering the parents' computer environment.

- ✓ Press the Escape key on your regular keyboard to return to the menu.
- ✓ Press the Escape key again to exit the game.





[www.comfyland.com](http://www.comfyland.com)

